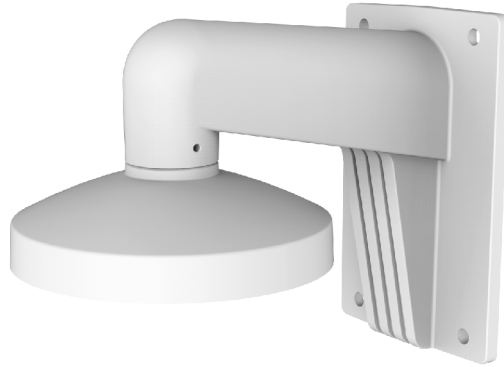


DS-1473ZJ-135



FEATURES:

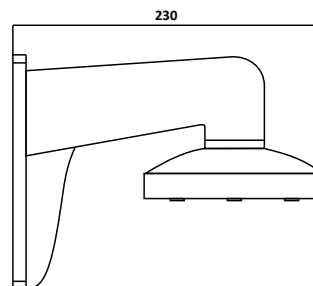
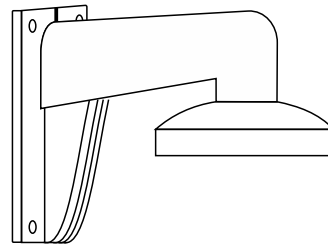
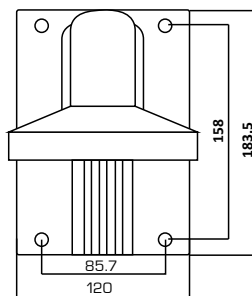
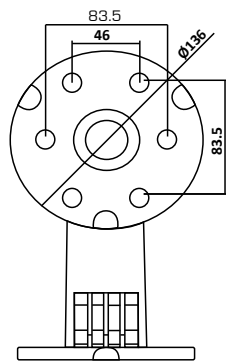
- Aluminum alloy with surface spray treatment
- The cable hole design facilitates the cable routing
- The cap design facilitates the installation

DS-1473ZJ-135

SPEC

| | |
|------------|----------------------------|
| Parameters | Wall mount |
| Colour | Hik White |
| Feature | Suitable for turret camera |
| Material | Aluminum Alloy |
| Dimension | Ø136 x 183.5 x 230mm |
| Weight | 704g |

- The mount should be installed on the flat wall.
- The waterproof rubber is necessary for the outdoor application.
- The pole must be capable of supporting at least 3 times as much as the total weight of the camera, and the mount.
- The mount's maximum load capacity is 3 kg (6.6 lb.).



unit: mm